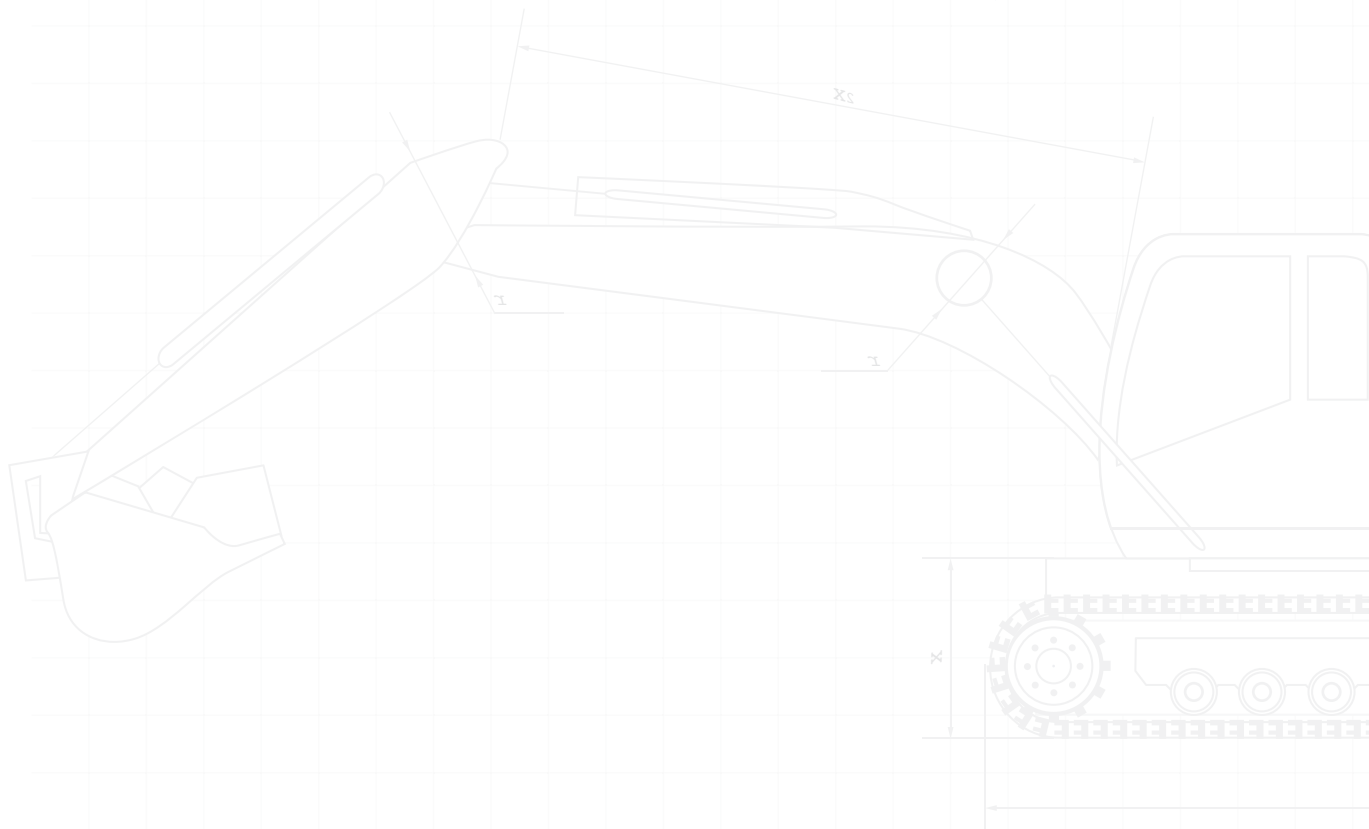






**|| A trusted supplier of coal
within the Asian region.**





A track record of safe and efficient operations

PROFILE

—
**Excellent
reputation and
track record**

PT Multi Tambangjaya Utama (MUTU) is a thermal coal mining company located in Central Kalimantan, Indonesia, that serves both the international and regional markets.

Founded in 1989, with production commencing in 2009, MUTU holds a third

generation Coal Contract of Work (CCoW) from the Government of the Republic of Indonesia comprising a 24,970 ha concession area in South Barito, East Barito and North Barito, all in Central Kalimantan.

MUTU's efficient and reliable operations are supported by integrated infrastructure

including a self-owned hauling road, generally good weather permitting year-round barging of coal.



INTEGRATED FOR ENERGY

—
Access to world-class
knowledge and network

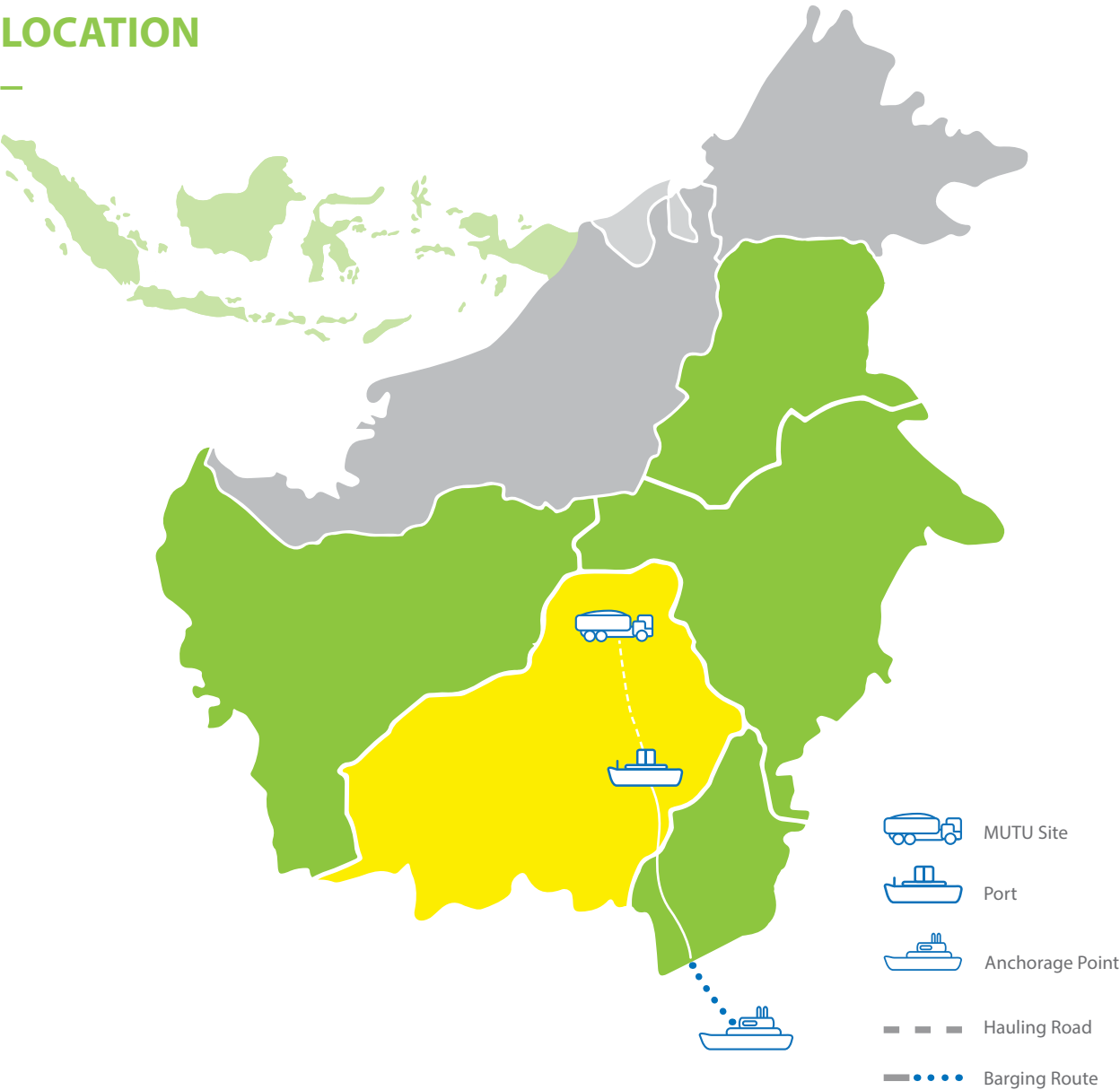
In 2012, MUTU was acquired by PT Indika Indonesia Resources, a wholly-owned subsidiary and member of Indika Energy Group.

Indika Energy Group is Indonesia's leading

integrated energy company, with an integrated business portfolio that spans the energy resources, energy services and energy infrastructure sectors.

As such, MUTU has access to the resources, knowledge, capability and network of a world-class organization, including synergies that support its efficient operation.

STRATEGIC LOCATION





MUTU benefits from its strategic location

The location of the MUTU concession in Central Kalimantan is highly strategic, with advantageous river depth.

The MUTU concession is situated 30 kilometers northeast of Buntok City, South Barito in Central

Kalimantan, about 240 kilometers from Palangkaraya, the capital of Central Kalimantan Province, and 250 kilometers north from Banjarmasin, the capital of South Kalimantan Province.

The MUTU port is located approximately four hours from Palangkaraya over land, and four hours from Banjarmasin by river. Both cities can be reached within an hour flight from Jakarta.



Gross
Calorific
Value
6,500
kcal/kg

Ash
9%

PRODUCT SPECIFICATIONS

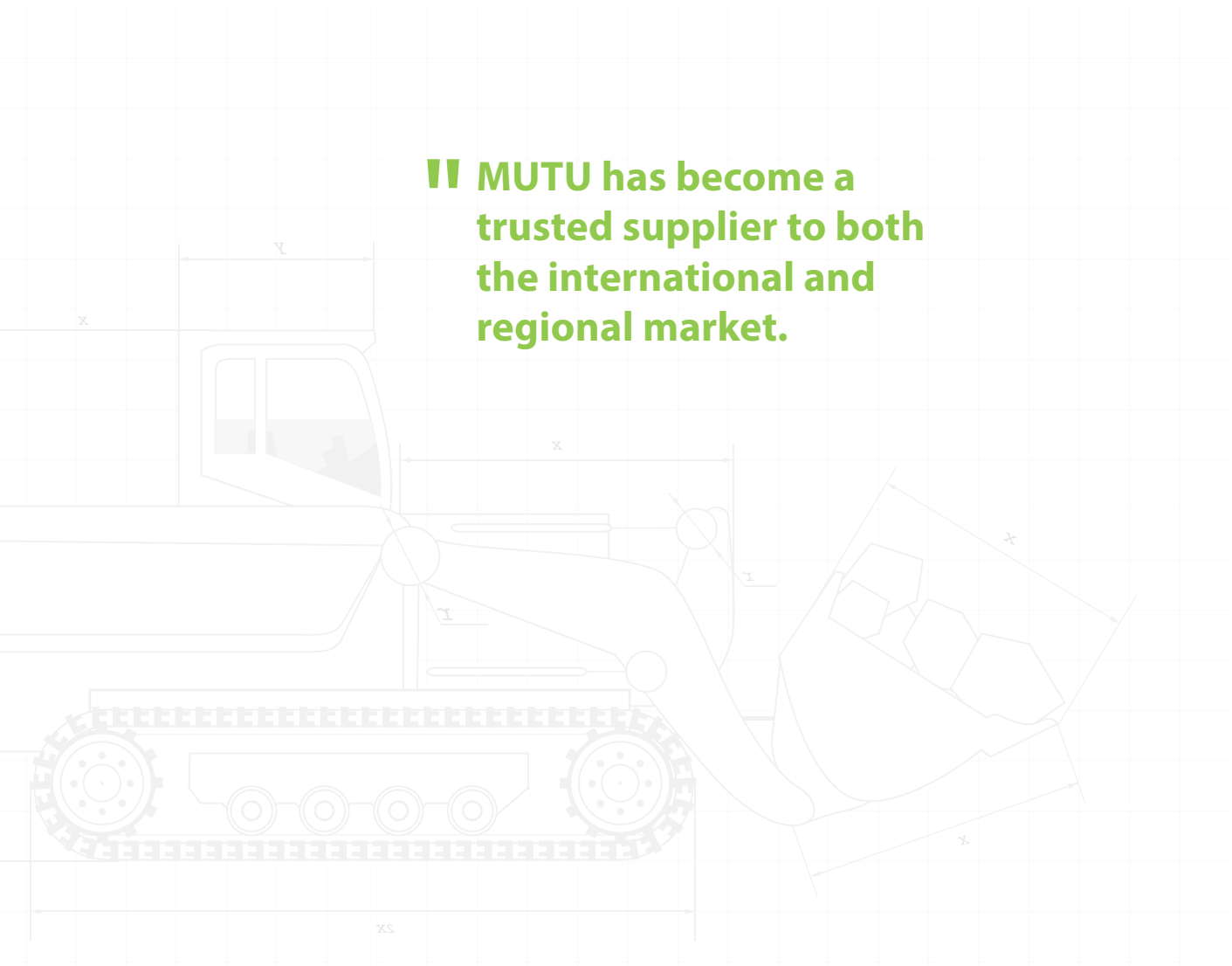
MUTU produces high calorific steam coal, which is mostly used for steam generation as well as for fuel supplements by various industries. Its coal specification offer customers the advantage of high heat value with low ash content for efficient coal usage.

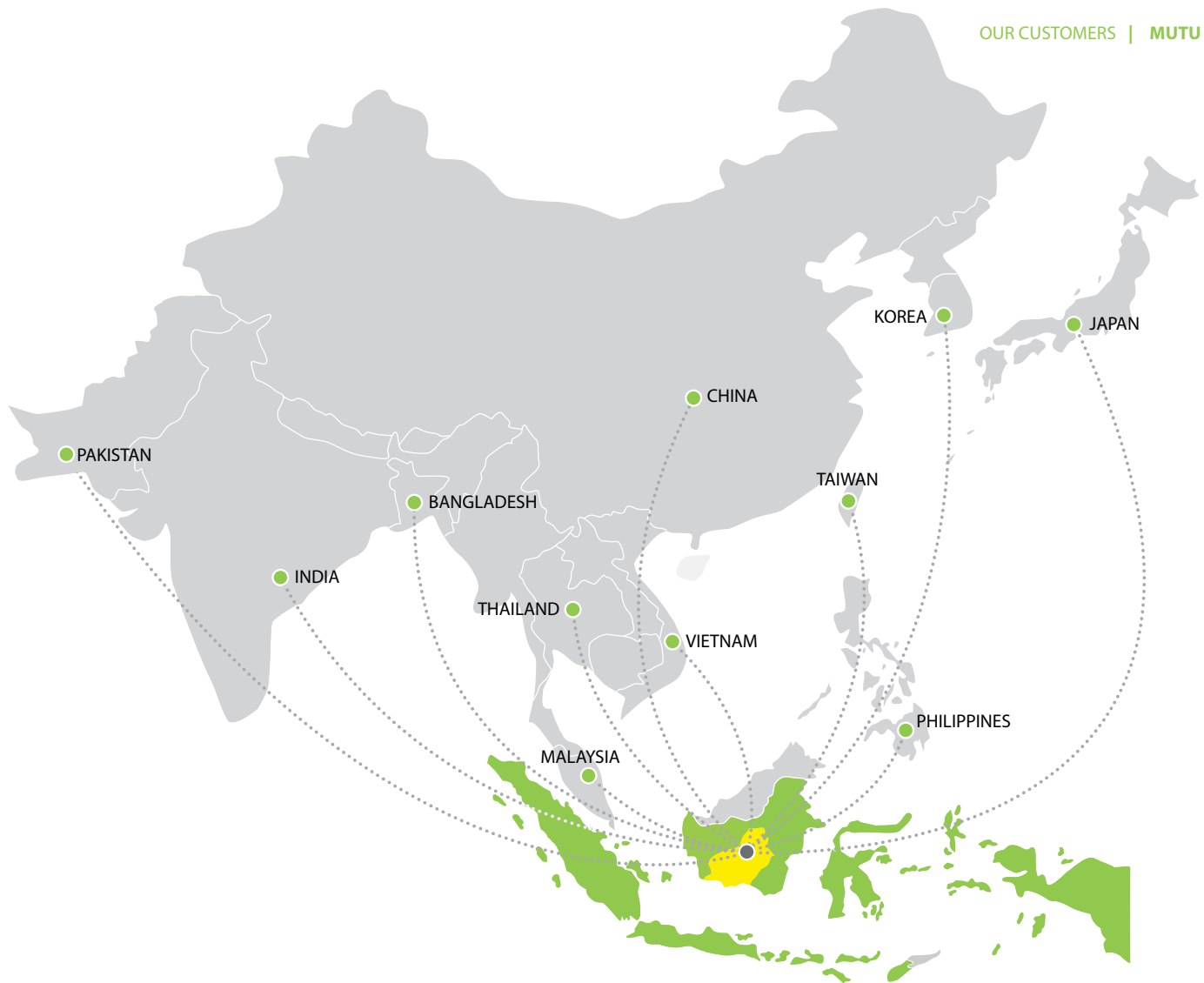
MUTU coal is analyzed by independent third parties to ensure that the quality consistently meets our customers' requirements.

Pit-to-port quality management
to ensure MUTU's coal meets
customer requirements



**II MUTU has become a
trusted supplier to both
the international and
regional market.**





OUR CUSTOMERS

MUTU has become a trusted supplier to both the international and regional market, thanks to its reputation for quality and reliability.

Today, MUTU ships to customers mainly in China, India, Japan, Korea, Philippines, Taiwan, Vietnam, among many others. MUTU will soon extend its reach

to its potential customers in Malaysia, Thailand, Bangladesh and Pakistan.



TRUSTED SUPPLIER

—
**An able and
reliable producer
of thermal coal**

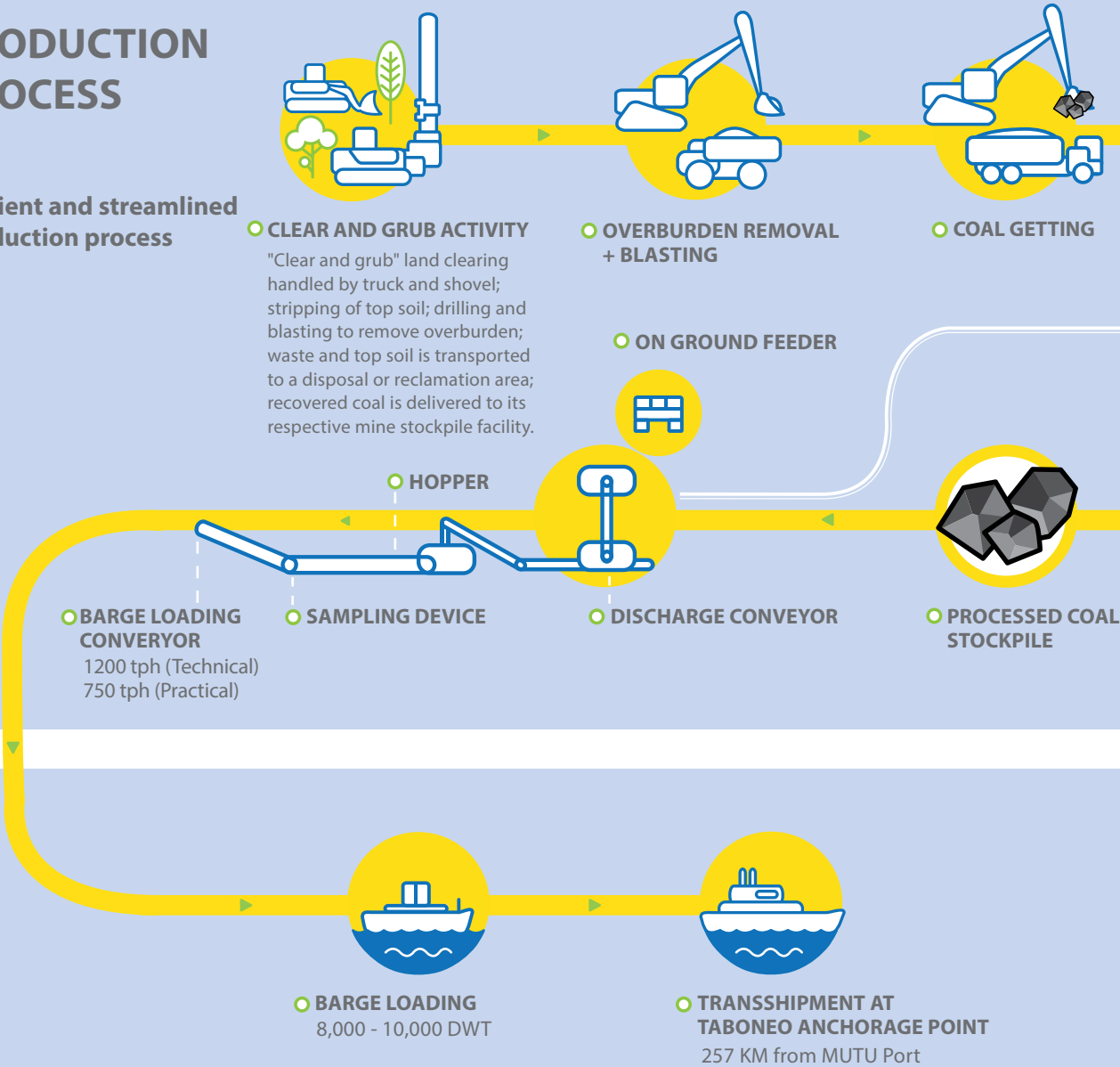
MUTU has built a solid track record as a reliable producer and supplier. Its fully controlled pit-to-port infrastructure and good river depth enable it to produce and ship in all seasons.

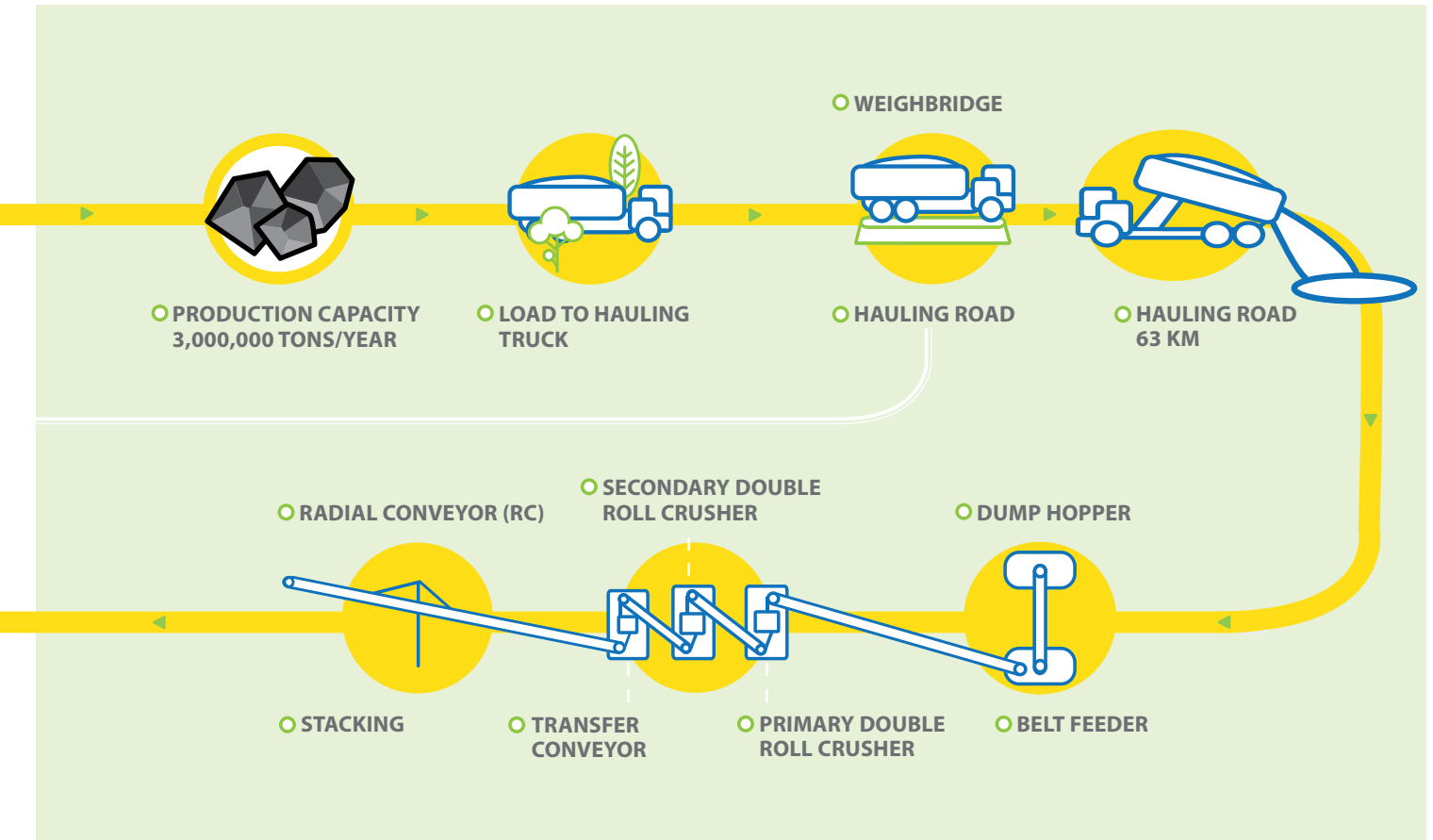
MUTU moreover maintains a processed coal stockpile of 120,000 MT to ensure uninterrupted supply. All shipments are checked by independent laboratories to ensure compliance with customer specifications.



PRODUCTION PROCESS

Efficient and streamlined
production process





RECLAMATION & MINE CLOSURE





INFRASTRUCTURE

**Integrated facilities
for reliable coal
productivity**

Hauling Road

A self-owned 20-meter wide paved hauling road, spanning approximately 63 kilometers from pit to port, capable of handling 200,000 tons gross weight per month.

Conveyor Jetty

Maximum loading rate capacity of 1200 tph.

Crusher

Capacity of three million tons per annum.



Barge Loading at Port

A self-owned barge loading at port with capacity of five million tons per annum, able to load 8,000 - 10,000 DWT barges, that operates year round even in the dry season.

Anchorage Point

Located in the Taboneo open sea, approximately 257 kilometers from the MUTU port.



Fuel Tank

A fuel tank at mine site has a capacity of 510,000 liters and a second fuel tank at port has a capacity of 55,000 liters.

Weighbridge

Weighbridge to capture volumetric data which can be used to track coal movements within the site area.



Safety, health and environmental considerations are consistently prioritized throughout operations

16

GOOD MINING PRACTICES

—

Upholding the principles of sustainable development

MUTU strives to implement Good Mining Practices in all aspects of its operations, with stringent Health, Safety and Environment (HSE) requirements and high standards of environmental compliance in order to minimize any negative impact on ecosystems in its operational areas.

Safety is always first in all operations, and the health of workers is also strictly monitored with real-time HSE performance monitoring.

Moreover, MUTU is in full compliance with relevant laws and regulations including the Environment Impact Analysis (*Analisa Mengenai Dampak Lingkungan – AMDAL*) feasibility study and environmental management and monitoring plans.

MUTU defines reclamation as returning the land and any watercourses to an acceptable standard of productive use, ensuring that these landforms and structures are stable, and that any watercourses are

of acceptable water quality. Extensive land reclamation and revegetation plans are in place to restore the surrounding environment to its original state, following mine closure. Specifically, reclamation involves activities such as removing any hazardous materials, reshaping the land, restoring top soil, and planting native trees and ground cover to stabilize the soil and restore local ecosystems.

**II MUTU strives to
implement Good Mining
Practices in all aspects of
its operations.**



CORPORATE SOCIAL RESPONSIBILITY

Committed to mutual growth for mutual prosperity

The success of MUTU has been made possible by the support of the community. As such, MUTU is committed to mutual growth in a respectful manner, which is carried out through MUTU's Corporate Social Responsibility (CSR) program.

MUTU's CSR program addresses the following aspects: health, education, community development and environment. These four aspects mutually support and strengthen one another for sustainable long term gains.

In order to realize gains in these four areas, MUTU focuses on three areas: Community Relations and Development, Infrastructure Development, and Nurturing the Environment.



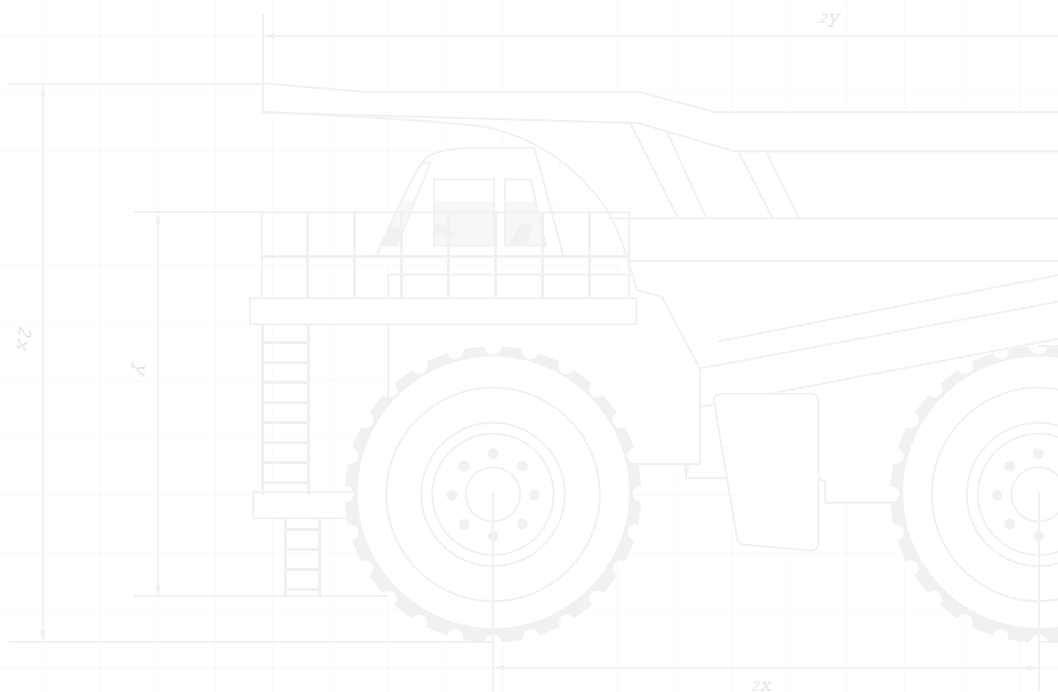


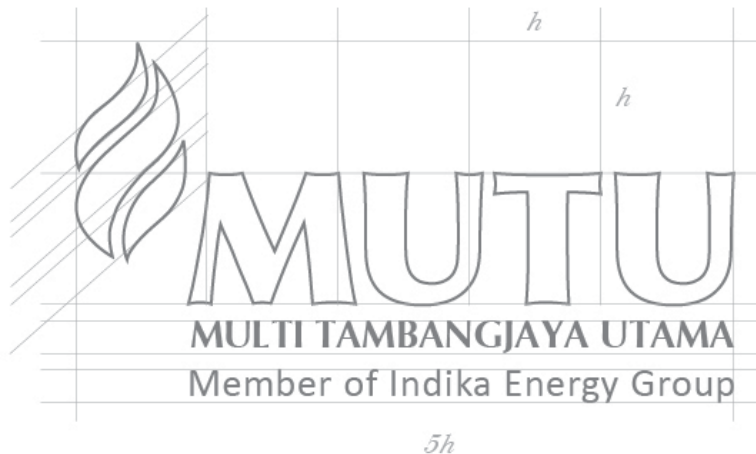
|| By giving back to and empowering the surrounding communities, MUTU helps to create a positive cycle of growth.





■ MUTU has invested in building comprehensive infrastructure essential for optimal utilization of coal resources.





PT MULTI TAMBANGJAYA UTAMA

Member of Indika Energy Group

Head Office

Mitra Building, 4th & 9th floor
Jl. Jend. Gatot Subroto Kav. 21
Jakarta 12930
Indonesia
T (021) 297 04800
F (021) 2557 9889

Site Office

Desa Teluk Betung
Kecamatan Karau Kuala
Kabupaten Barito Selatan
Kalimantan Tengah 73761
Indonesia

E marketing.coal@indikaenergy.co.id